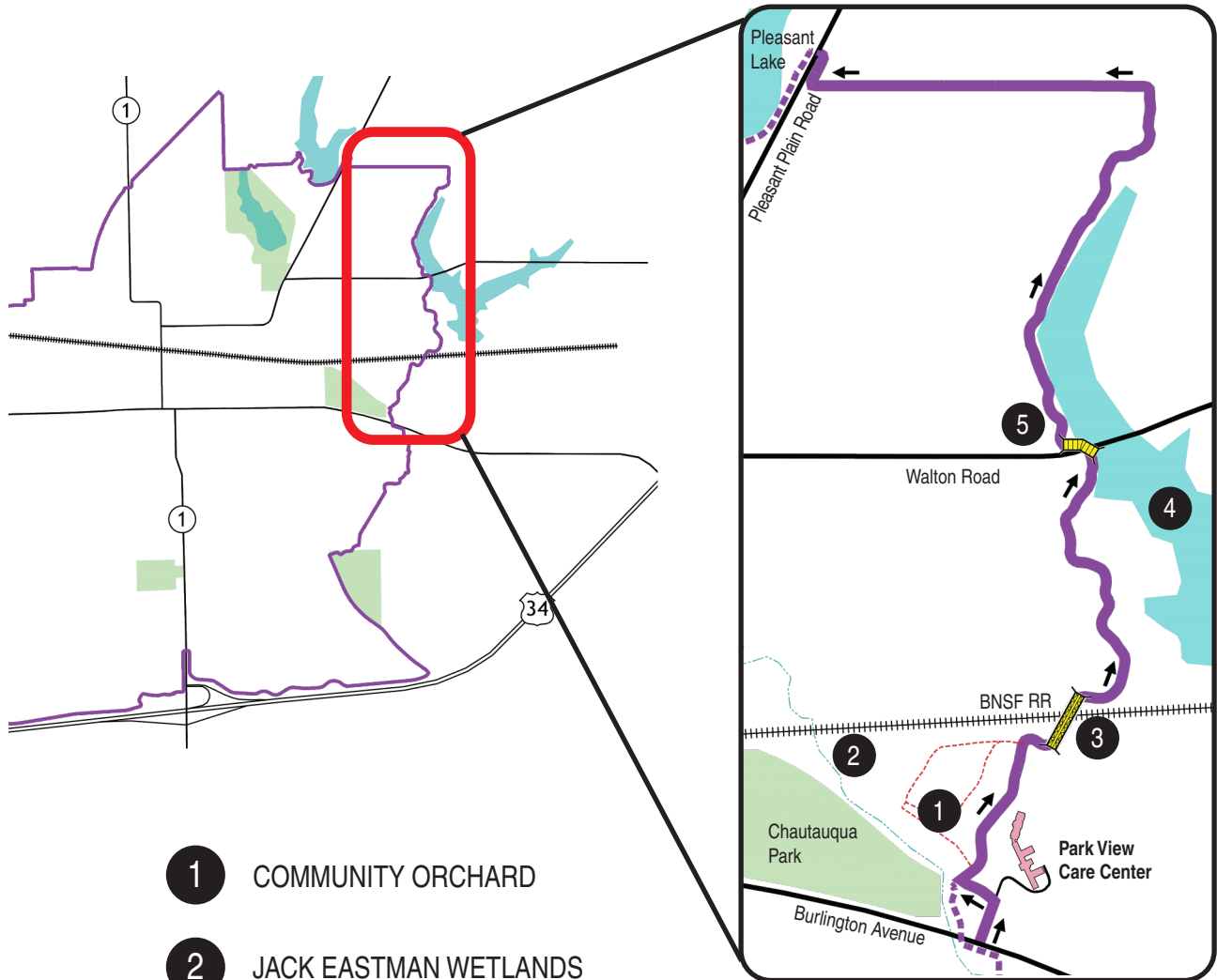


JEFFERSON COUNTY TRAILS COUNCIL PRESENTS

TRAIL DRIVE

FROM CHAUTAUQUA PARK TO PLEASANT LAKE



- 1 COMMUNITY ORCHARD
- 2 JACK EASTMAN WETLANDS
- 3 THE LOUDEN TRAIL BRIDGE
- 4 WALTON LAKE
- 5 WALTON BOARDWALK BRIDGE



JEFFERSON
COUNTY
TRAILS
COUNCIL

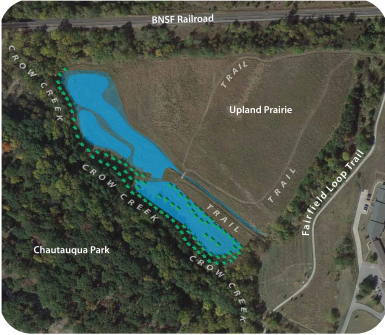
www.jeffersoncountytails.org

1 COMMUNITY ORCHARD



The Community Orchard was planted in 2012 with the help of 250 volunteers as a kickoff to the Hometown Rewards Program. The Community Orchard is on public property and is meant to be an edible forest open to the public. It relies on volunteers to help maintain and care for the property. There are over 150 varieties of fruit and nut trees in the orchard including apples, pears, plums, peaches, chestnuts, walnuts, pawpaws, persimmons, mulberries, and hazelnuts. As trees mature, community members are encouraged to visit and enjoy the harvest at no cost. For more information or to help volunteer, contact Scott Timm at 515-291-2560 or stimm@iastate.edu.

2 JACK EASTMAN WETLANDS



Located partly within the floodplain of Crow Creek, this is a 24 acre mitigation buffer/native grass planting. The former agricultural site comprises roughly 5.1 acres of restored/created wetlands, 3.5 acres of preserved wooded drainage and 15.4 acres of upland habitat. The site is now home to an abundant amount of wildlife including many mammals, birds, reptiles, amphibians, crayfish, clams, and insects that rely on the wetlands as feeding grounds, nesting habitats, spawning grounds, travel corridors and more. The site provides especially good habitat for mammals, amphibians and shore-birds. Also this area adds to the "connectivity benefit" for wildlife moving between Lamson Woods, Chautauqua Park, and Waterworks Park.

3 LOUDEN TRAIL BRIDGE



The Louden Trail Bridge, built over the railroad near Chautauqua Park, was inspired by local history. Old images of the Louden Manufacturing Company products and railroad history inspired the steel cage for the bridge and the 171 tiles that adorn the interior of the bridge. Artist Judy Bales created a pattern that gives rhythm and dynamism to the bridge while being reminiscent of historic barn structures. This theme continues in the ceramic tiles that enhance the bridge's concrete curb. These tiles were designed and created by Mark Shafer's advanced art classes at Fairfield High School.

4 WALTON LAKE



Because of severe water shortages in 1910, Walton Lake (the third reservoir) was built in 1923, covering 60 surface acres. In the 1950's the dam was raised by 10 feet. Walton Lake is being developed for water recreation to supplement the golf course which was developed privately in 1929. The Loop Trail travels along part of the west side of the lake. The Walton Club operates a golf course here, and building lots have been sold around the lake.

5 WALTON BOARDWALK BRIDGE



Constructed in 2013 and funded by a State Recreational Trail grant and local donations, the community constructed a pedestrian and cycling bridge at Walton Road. The community identified a public safety need, and this bridge improved sight lines for vehicles and trail users. Impressively, community volunteers built the bridge, valued at \$33,000, which included donated design work by Kent Rice.